

**SCREENING REPORT FOR AN ENVIRONMENTAL AUTHORIZATION AS
REQUIRED BY THE 2014 EIA REGULATIONS – PROPOSED SITE
ENVIRONMENTAL SENSITIVITY**

EIA Reference number:

Project name: Thungela Lephalele CBM

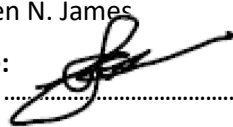
Project title: EIA

Date screening report generated: 23/04/2026 10:35:53

Applicant: Thungela Operations Limited

Compiler: Dr Lucien N. James

Compiler signature:



Application Category: Mining|Production Right|Gas or Oil Terrestrial



Table of Contents

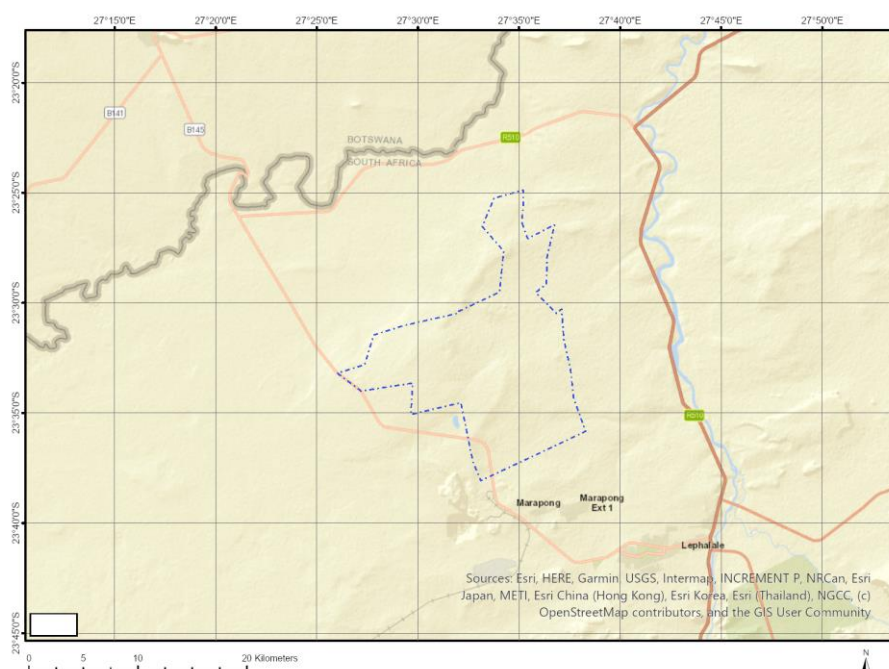
Proposed Project Location	3
Orientation map 1: General location	3
Map of proposed site and relevant area(s)	4
Cadastral details of the proposed site	4
Wind and Solar developments with an approved Environmental Authorisation or applications under consideration within 30 km of the proposed area	6
Environmental Management Frameworks relevant to the application	7
Environmental screening results and assessment outcomes	7
Relevant development incentives, restrictions, exclusions or prohibitions	7
Proposed Development Area Environmental Sensitivity	8
Specialist assessments identified	8
Results of the environmental sensitivity of the proposed area	10
MAP OF RELATIVE AGRICULTURE THEME SENSITIVITY	10
MAP OF RELATIVE ANIMAL SPECIES THEME SENSITIVITY	11
MAP OF RELATIVE AQUATIC BIODIVERSITY THEME SENSITIVITY	12
MAP OF RELATIVE ARCHAEOLOGICAL AND CULTURAL HERITAGE THEME SENSITIVITY	13
MAP OF RELATIVE CIVIL AVIATION THEME SENSITIVITY	14
MAP OF RELATIVE DEFENCE THEME SENSITIVITY	15
MAP OF RELATIVE PALEONTOLOGY THEME SENSITIVITY	16
MAP OF RELATIVE PLANT SPECIES THEME SENSITIVITY	17
MAP OF RELATIVE TERRESTRIAL BIODIVERSITY THEME SENSITIVITY	18

Proposed Project Location

Orientation map 1: General location



Map of proposed site and relevant area(s)



Cadastral details of the proposed site

Property details:

No	Farm Name	Farm/ Erf No	Portion	Latitude	Longitude	Property Type
1	GOEDEHOOP	457	0	23°37'58.52S	27°31'20.9E	Farm
2	APPELVLAKE	448	0	23°37'59.48S	27°34'57.21E	Farm
3	VOORUIT	449	0	23°36'55.83S	27°34'11.37E	Farm
4	DAARBY	458	0	23°38'57.54S	27°32'7.1E	Farm
5	DROOGEHEUVEL	447	0	23°36'56.42S	27°37'31.81E	Farm
6	BULKIP	701	0	23°28'34.54S	27°35'14.14E	Farm
7	KURZABONAKOP	399	0	23°31'22.2S	27°30'37.09E	Farm
8	PADDAKRAAL	405	0	23°31'44.45S	27°36'3.63E	Farm
9	MAAIAMAZAMSHOEK	266	0	23°35'1.99S	27°25'59.71E	Farm
10	WOESTEVLAKE	172	0	23°29'1.51S	27°33'2.35E	Farm
11	WITHOUTPAN	404	0	23°30'37.53S	27°35'31.63E	Farm
12	SCHRIKVOORBY	445	0	23°34'18.7S	27°36'21.56E	Farm
13	EENDRAGTPAN	451	0	23°34'24.95S	27°33'38.08E	Farm
14	GELYKEBULT	455	0	23°35'27.32S	27°30'59.96E	Farm
15	GANZEPAN	446	0	23°35'41.07S	27°36'39.23E	Farm
16	NEW YORK	121	0	23°25'5.72S	27°32'52.64E	Farm
17	VAN WYKS PAN	441	0	23°35'51.02S	27°39'54.79E	Farm
18	KNAPDAAR	407	0	23°30'12.34S	27°38'16.12E	Farm
19	KOEDOESLAAGTE	171	0	23°29'53.98S	27°30'37.65E	Farm
20	ELANDSVLEY	453	0	23°34'3.67S	27°30'58.2E	Farm
21	OLIPHANTSPAD	255	0	23°33'13.94S	27°28'4.75E	Farm
22	DRAAI-OM	174	0	23°27'44.24S	27°37'31.92E	Farm
23	MAJAMA ZYN KOPPIE	254	0	23°34'1.64S	27°25'13.35E	Farm
24	WELGEVONDEN	444	0	23°32'58.51S	27°36'15.3E	Farm
25	ZONDERWATER	442	0	23°34'27.87S	27°39'8.91E	Farm
26	WATERVAL	169	0	23°25'46.81S	27°34'56.67E	Farm
27	GELYKEBULT	450	0	23°35'42.65S	27°33'46.39E	Farm

28	KERRYFONTEIN	402	0	23°30'35.87S	27°33'1.79E	Farm
29	KLIMOPFFONTEIN	223	0	23°31'54.46S	27°28'24.34E	Farm
30	KALKVLAKTE	256	0	23°34'26.35S	27°28'37.83E	Farm
31	GROOTPAN	452	0	23°33'14.16S	27°33'28.74E	Farm
32	EIGENDOMSBULT	222	0	23°30'41.62S	27°27'48.03E	Farm
33	GRAAFFWATER	456	0	23°36'45.77S	27°31'15.27E	Farm
34	NOOITGEDACHT	403	0	23°31'58.04S	27°33'16.68E	Farm
35	FIG TREE	716	0	23°24'15.6S	27°34'38.4E	Farm
36	KOPBEENPAN	164	0	23°26'32.3S	27°37'43.73E	Farm
37	LEEUFONTEIN	400	0	23°32'39.44S	27°30'47.48E	Farm
38	CALEDONIA	408	0	23°31'35.53S	27°38'34.5E	Farm
39	KLIPPAN	224	0	23°32'36.33S	27°25'18.43E	Farm
40	MATJESFONTEIN	168	0	23°27'35.15S	27°32'33.95E	Farm
41	DROOGEHEUVEL	447	0	23°36'56.42S	27°37'31.81E	Farm Portion
42	APPELVLAKE	448	0	23°37'52.8S	27°35'14.7E	Farm Portion
43	APPELVLAKE	448	1	23°38'23.04S	27°33'55.47E	Farm Portion
44	VOORUIT	449	0	23°36'55.83S	27°34'11.37E	Farm Portion
45	GOEDEHOOP	457	0	23°37'58.52S	27°31'20.9E	Farm Portion
46	DAARBY	458	0	23°38'57.54S	27°32'7.1E	Farm Portion
47	FIG TREE	716	0	23°24'40.85S	27°34'28.29E	Farm Portion
48	BULKIP	701	0	23°28'55.62S	27°34'46.12E	Farm Portion
49	BULKIP	701	1	23°28'1.22S	27°35'58.42E	Farm Portion
50	GRAAFFWATER	456	1	23°36'34.55S	27°32'11.25E	Farm Portion
51	GELYKEBULT	455	0	23°35'27.32S	27°30'59.96E	Farm Portion
52	ELANDSVLEY	453	0	23°34'3.67S	27°30'58.2E	Farm Portion
53	GROOTPAN	452	0	23°33'14.16S	27°33'28.74E	Farm Portion
54	EENDRAGTPAN	451	0	23°34'24.95S	27°33'38.08E	Farm Portion
55	GELYKEBULT	450	0	23°35'42.65S	27°33'46.39E	Farm Portion
56	GANZEPAN	446	0	23°35'41.07S	27°36'39.23E	Farm Portion
57	SCHRIKVOORBY	445	0	23°34'39.32S	27°35'44.61E	Farm Portion
58	SCHRIKVOORBY	445	1	23°33'57.19S	27°37'0.09E	Farm Portion
59	WELGEVONDEN	444	0	23°32'58.51S	27°36'15.3E	Farm Portion
60	ZONDERWATER	442	0	23°34'38.96S	27°39'2.84E	Farm Portion
61	VAN WYKS PAN	441	1	23°35'32.85S	27°39'39.2E	Farm Portion
62	CALEDONIA	408	0	23°31'35.53S	27°38'34.5E	Farm Portion
63	KNAPDAAR	407	0	23°30'12.34S	27°38'16.12E	Farm Portion
64	PADDAKRAAL	405	0	23°31'44.45S	27°36'3.63E	Farm Portion
65	WITHOUTPAN	404	1	23°29'47.97S	27°36'29.04E	Farm Portion
66	WITHOUTPAN	404	0	23°30'46.95S	27°35'20.7E	Farm Portion
67	NOOITGEDACHT	403	0	23°31'58.04S	27°33'16.68E	Farm Portion
68	KERRYFONTEIN	402	0	23°30'35.87S	27°33'1.79E	Farm Portion
69	LEEUFONTEIN	400	0	23°32'39.44S	27°30'47.48E	Farm Portion
70	KURZABONAKOP	399	0	23°31'22.2S	27°30'37.09E	Farm Portion
71	MAAIAMAZAMSHOEK	266	0	23°35'1.99S	27°25'59.71E	Farm Portion
72	KALKVLAKTE	256	0	23°34'26.35S	27°28'37.83E	Farm Portion
73	OLIPHANTSPAD	255	0	23°33'13.94S	27°28'4.75E	Farm Portion
74	MAJAMA ZYN KOPPIE	254	0	23°33'43.94S	27°25'4.41E	Farm Portion
75	MAJAMA ZYN KOPPIE	254	1	23°34'14.07S	27°25'19.62E	Farm Portion
76	KLIPPAN	224	0	23°32'36.33S	27°25'18.43E	Farm Portion
77	KLIMOPFFONTEIN	223	0	23°32'9.63S	27°28'41.4E	Farm Portion
78	EIGENDOMSBULT	222	0	23°30'41.62S	27°27'48.03E	Farm Portion
79	DRAAI-OM	174	0	23°27'44.24S	27°37'31.92E	Farm Portion
80	WOESTEVLAKE	172	0	23°29'1.51S	27°33'2.35E	Farm Portion
81	KOEDOESLAAGTE	171	0	23°29'53.98S	27°30'37.65E	Farm Portion
82	WATERVAL	169	0	23°25'56.46S	27°34'25.72E	Farm Portion
83	WATERVAL	169	1	23°25'31.32S	27°35'46.39E	Farm Portion
84	MATJESFONTEIN	168	0	23°27'35.15S	27°32'33.95E	Farm Portion
85	KOPBEENPAN	164	0	23°26'32.3S	27°37'43.73E	Farm Portion
86	NEW YORK	121	0	23°24'41.48S	27°33'19.22E	Farm Portion

Development footprint¹ vertices:
No development footprint(s) specified.

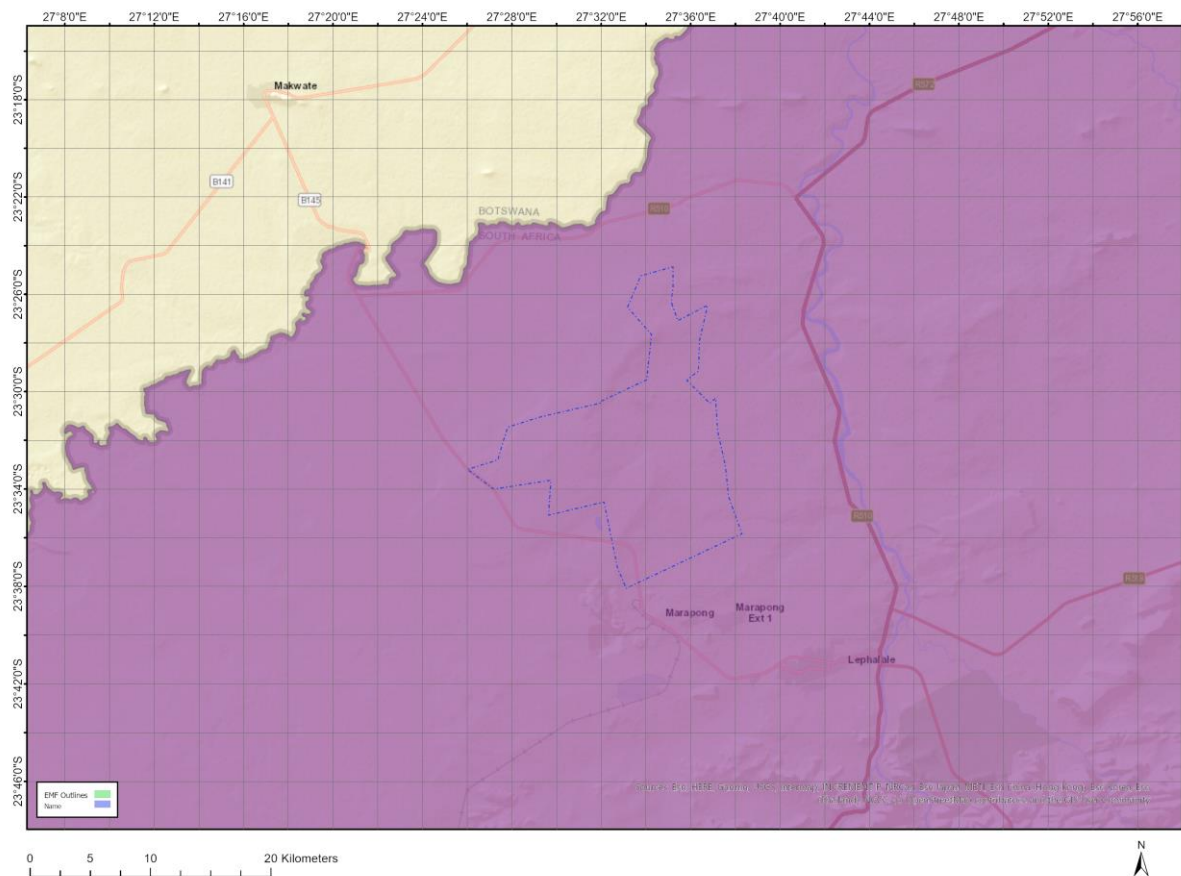
Wind and Solar developments with an approved Environmental Authorisation or applications under consideration within 30 km of the proposed area

No	EIA Reference No	Classification	Status of application	Distance from proposed area (km)
1	14/12/16/3/3/2/2242	Solar PV	Approved	5.1
2	14/12/16/3/3/2/304	Solar PV	Approved	1.4
3	14/12/16/3/3/2/2518	Solar PV	Approved	25
4	14/12/16/3/3/3/40	Wind	Approved	0
5	14/12/16/3/3/2/2652	Solar PV	Approved	12.2
6	14/12/16/3/3/2/302/AM2	Solar PV	Approved	1.4
7	14/12/16/3/3/2/301/AM2	Solar PV	Approved	1.4
8	14/12/16/3/3/2/302/AM1	Solar PV	Approved	1.4
9	14/12/16/3/3/2/303	Solar PV	Approved	1.4
10	14/12/16/3/3/2/302	Solar PV	Approved	1.4
11	14/12/16/3/3/2/304/AM1	Solar PV	Approved	1.4
12	14/12/16/3/3/2/2241	Solar PV	Approved	4.9
13	14/12/16/3/3/2/303/AM2	Solar PV	Approved	1.4
14	12/12/20/2152	Solar PV	Approved	19.2
15	14/12/16/3/3/2/2517	Solar PV	Approved	25
16	14/12/16/3/3/2/2290	Solar PV	Approved	4.9
17	14/12/16/3/3/2/301	Solar PV	Approved	1.4
18	14/12/16/3/3/2/303/AM1	Solar PV	Approved	1.4
19	14/12/16/3/3/2/300/AM2	Solar PV	Approved	1.4
20	14/12/16/3/3/2/444	Solar PV	Approved	20.3
21	12/12/20/2306	Solar PV	Approved	0
22	14/12/16/3/3/2/301/AM1	Solar PV	Approved	1.4
23	14/12/16/3/3/2/700	Solar PV	Approved	19.3
24	14/12/16/3/3/2/2520	Solar PV	Approved	26.6
25	14/12/16/3/3/2/2521	Solar PV	Approved	26.6
26	14/12/16/3/3/2/2519	Solar PV	Approved	26.3
27	14/12/16/3/3/2/700/AM1	Solar PV	Approved	19.3
28	14/12/16/3/3/2/2521	Solar PV	Approved	27
29	14/12/16/3/3/2/444/AM1	Solar PV	Approved	20.3
30	12/1/9/2-W94	Solar PV	Approved	0
31	14/12/16/3/3/2/2520	Solar PV	Approved	26.6
32	14/12/16/3/3/2/2518	Solar PV	Approved	26
33	14/12/16/3/3/2/2522	Solar PV	Approved	27.8
34	14/12/16/3/3/2/2291	Solar PV	Approved	5.1
35	14/12/16/3/3/2/304/AM2	Solar PV	Approved	1.4
36	14/12/16/3/3/2/2653	Solar PV	Approved	10.4

¹ “development footprint”, means the area within the site on which the development will take place and includes all ancillary developments for example roads, power lines, boundary walls, paving etc. which require vegetation clearance or which will be disturbed and for which the application has been submitted.

37	14/12/16/3/3/2/300/AM1	Solar PV	Approved	1.4
38	14/12/16/3/3/2/300	Solar PV	Approved	1.4

Environmental Management Frameworks relevant to the application



Environmental Management Framework	LINK
Waterberg District Municipality EMF	https://screening.environment.gov.za/ScreeningDownloads/EMF/WDEM_F_Final_EMF_Report.pdf

Environmental screening results and assessment outcomes

The following sections contain a summary of any development incentives, restrictions, exclusions or prohibitions that apply to the proposed development site as well as the most environmental sensitive features on the site based on the site sensitivity screening results for the application classification that was selected. The application classification selected for this report is:

Mining | Production Right | Gas or Oil Terrestrial.

Relevant development incentives, restrictions, exclusions or prohibitions

The following development incentives, restrictions, exclusions or prohibitions and their implications that apply to this site are indicated below.

Incentive, restriction or prohibition	Implication
Air Quality-Waterberg-Bojanala Priority Area	https://screening.environment.gov.za/ScreeningDownloads/DevelopmentZones/gg39489_nn1207a.pdf
South African Protected Areas	https://screening.environment.gov.za/ScreeningDownloads/DevelopmentZones/SAPAD_OR_2025_Q3_Metadata.pdf

Proposed Development Area Environmental Sensitivity

The following summary of the development site environmental sensitivities is identified. Only the highest environmental sensitivity is indicated. The footprint environmental sensitivities for the proposed development footprint as identified, are indicative only and must be verified on site by a suitably qualified person before the specialist assessments identified below can be confirmed.

Theme	Very High sensitivity	High sensitivity	Medium sensitivity	Low sensitivity
Agriculture Theme	X			
Animal Species Theme		X		
Aquatic Biodiversity Theme	X			
Archaeological and Cultural Heritage Theme				X
Civil Aviation Theme			X	
Defence Theme				X
Paleontology Theme	X			
Plant Species Theme			X	
Terrestrial Biodiversity Theme	X			

Specialist assessments identified

Based on the selected classification, and the known impacts associated with the proposed development, the following list of specialist assessments have been identified for inclusion in the assessment report. It is the responsibility of the EAP to confirm this list and to motivate in the assessment report, the reason for not including any of the identified specialist study including the provision of photographic evidence of the site situation.

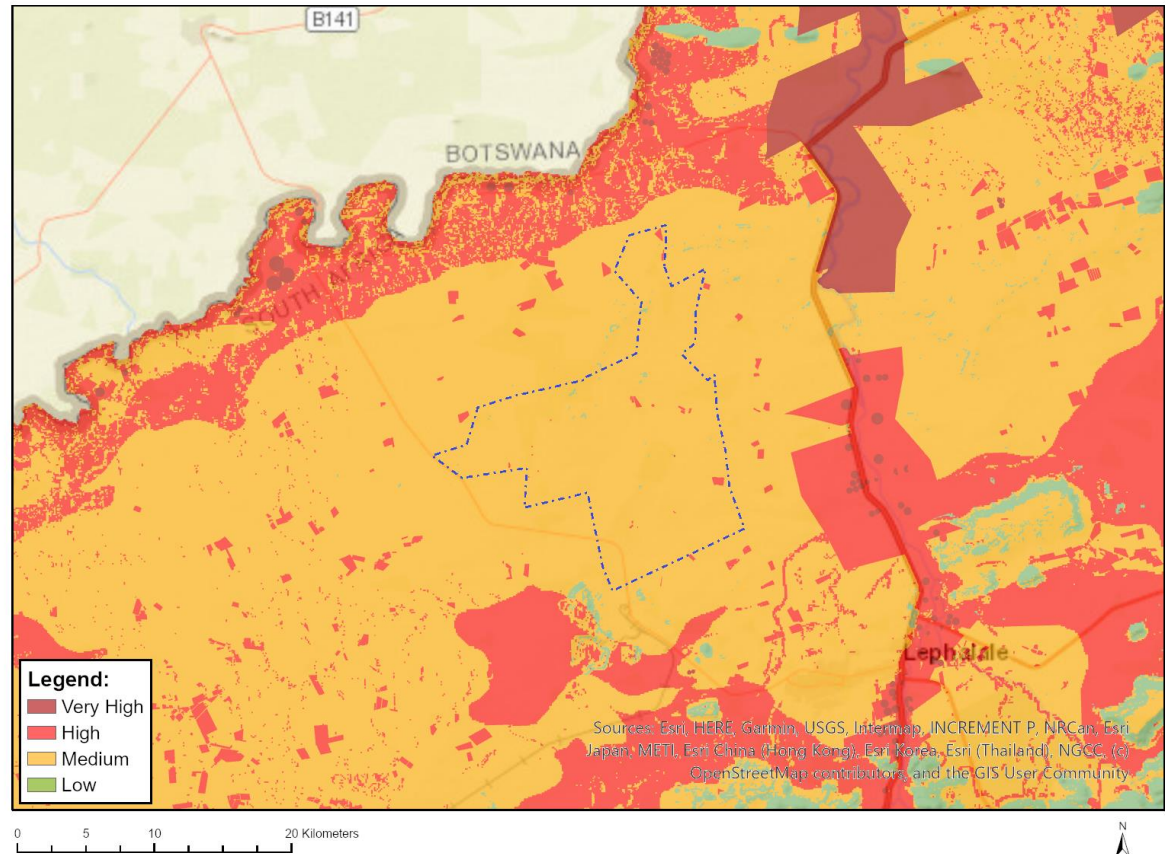
No	Specialist assessment	Assessment Protocol
1	Agricultural Impact Assessment	https://screening.environment.gov.za/ScreeningDownloads/AssessmentProtocols/Gazetted_General_Agriculture_Assessment_Protocols.pdf
2	Landscape/Visual Impact Assessment	https://screening.environment.gov.za/ScreeningDownloads/AssessmentProtocols/Gazetted_General_Requirement_Assessment_Protocols.pdf
3	Archaeological and Cultural Heritage Impact Assessment	https://screening.environment.gov.za/ScreeningDownloads/AssessmentProtocols/GuidanceforHIA.pdf
4	Palaeontology Impact Assessment	https://screening.environment.gov.za/ScreeningDownloads/AssessmentProtocols/GuidanceforPIA.pdf
5	Terrestrial Biodiversity Impact Assessment	https://screening.environment.gov.za/ScreeningDownloads/AssessmentProtocols/Gazetted_Terrestrial_Biodiversity_Assessment_Protocols.pdf

6	Aquatic Biodiversity Impact Assessment	https://screening.environment.gov.za/ScreeningDownloads/AssessmentProtocols/Gazetted_Aquatic_Biodiversity_Assessment_Protocols.pdf
7	Hydrology Assessment	https://screening.environment.gov.za/ScreeningDownloads/AssessmentProtocols/Gazetted_General_Requirement_Assessment_Protocols.pdf
8	RFI Assessment	https://screening.environment.gov.za/ScreeningDownloads/AssessmentProtocols/Gazetted_General_Requirement_Assessment_Protocols.pdf
9	Noise Impact Assessment	https://screening.environment.gov.za/ScreeningDownloads/AssessmentProtocols/Gazetted_Noise_Impacts_Assessment_Protocol.pdf
10	Geotechnical Assessment	https://screening.environment.gov.za/ScreeningDownloads/AssessmentProtocols/Gazetted_General_Requirement_Assessment_Protocols.pdf
11	Health Impact Assessment	https://screening.environment.gov.za/ScreeningDownloads/AssessmentProtocols/Gazetted_General_Requirement_Assessment_Protocols.pdf
12	Ambient Air Quality Impact Assessment	https://screening.environment.gov.za/ScreeningDownloads/AssessmentProtocols/Gazetted_General_Requirement_Assessment_Protocols.pdf
13	Plant Species Assessment	https://screening.environment.gov.za/ScreeningDownloads/AssessmentProtocols/Gazetted_Plant_Species_Assessment_Protocols.pdf
14	Animal Species Assessment	https://screening.environment.gov.za/ScreeningDownloads/AssessmentProtocols/Gazetted_Animal_Species_Assessment_Protocols.pdf

Results of the environmental sensitivity of the proposed area.

The following section represents the results of the screening for environmental sensitivity of the proposed site for relevant environmental themes associated with the project classification. It is the duty of the EAP to ensure that the environmental themes provided by the screening tool are comprehensive and complete for the project. Refer to the disclaimer.

MAP OF RELATIVE AGRICULTURE THEME SENSITIVITY

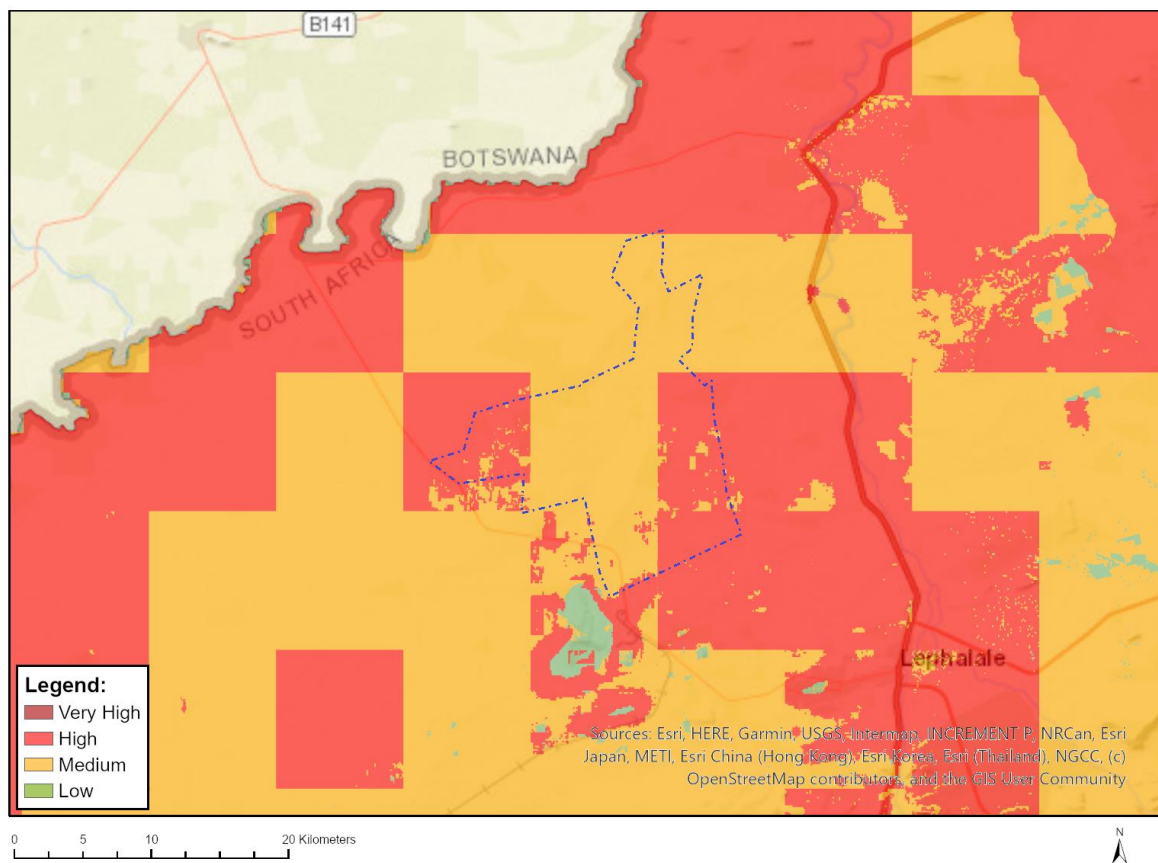


Very High sensitivity	High sensitivity	Medium sensitivity	Low sensitivity
X			

Sensitivity Features:

Sensitivity	Feature(s)
High	Old_Fields
High	Rainfed Annual Crop Cultivation / Planted Pastures
High	08. Moderate
Low	05. Low
Medium	07. Low-Moderate
Medium	06. Low-Moderate
Very High	Horticulture

MAP OF RELATIVE ANIMAL SPECIES THEME SENSITIVITY



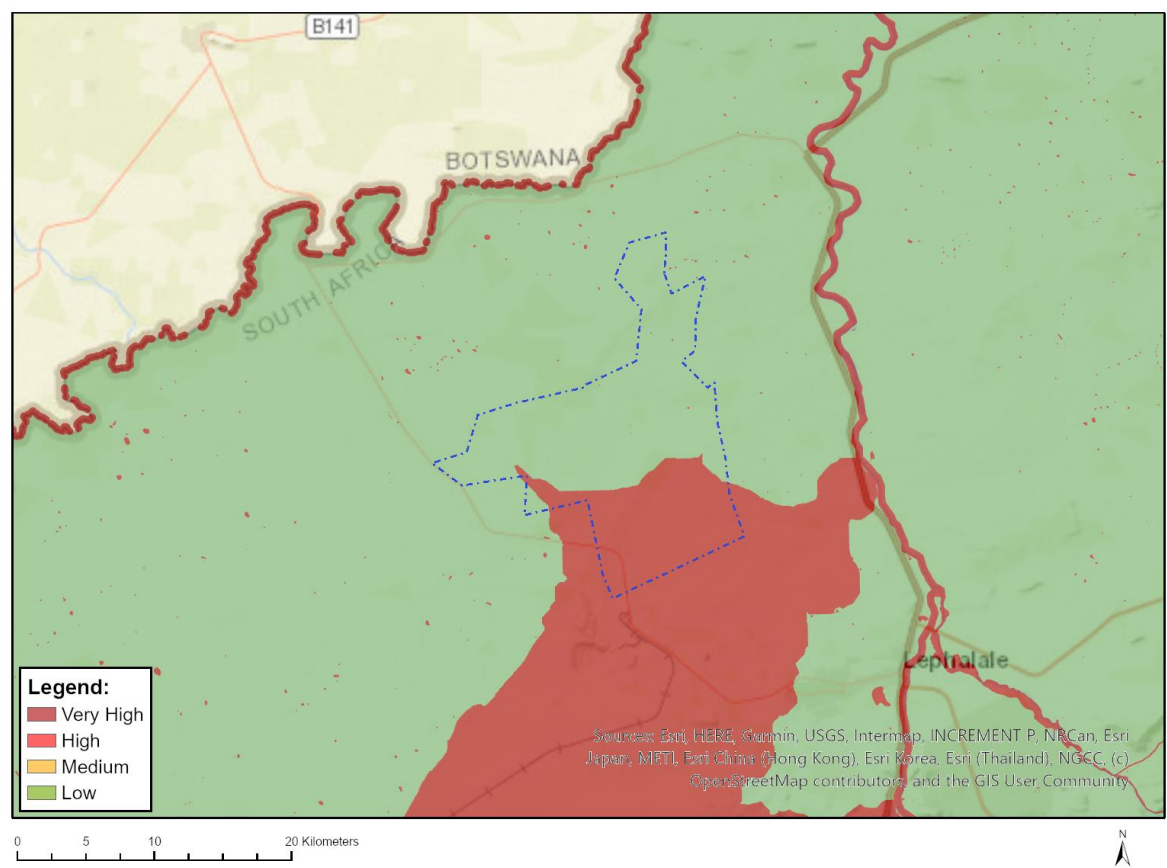
Where only a sensitive plant unique number or sensitive animal unique number is provided in the screening report and an assessment is required, the environmental assessment practitioner (EAP) or specialist is required to email SANBI at eiadatarequests@sanbi.org.za listing all sensitive species with their unique identifiers for which information is required. The name has been withheld as the species may be prone to illegal harvesting and must be protected. SANBI will release the actual species name after the details of the EAP or specialist have been documented.

Very High sensitivity	High sensitivity	Medium sensitivity	Low sensitivity
	X		

Sensitivity Features:

Sensitivity	Feature(s)
High	Aves-Torgos tracheliotos
High	Aves-Polemaetus bellicosus
High	Aves-Aquila rapax
High	Aves-Gyps africanus
Low	Subject to confirmation
Medium	Aves-Terathopius ecaudatus
Medium	Aves-Aquila rapax
Medium	Aves-Gyps africanus
Medium	Sensitive species 24
Medium	Mammalia-Dasymys robertsii
Medium	Mammalia-Lycaon pictus

MAP OF RELATIVE AQUATIC BIODIVERSITY THEME SENSITIVITY

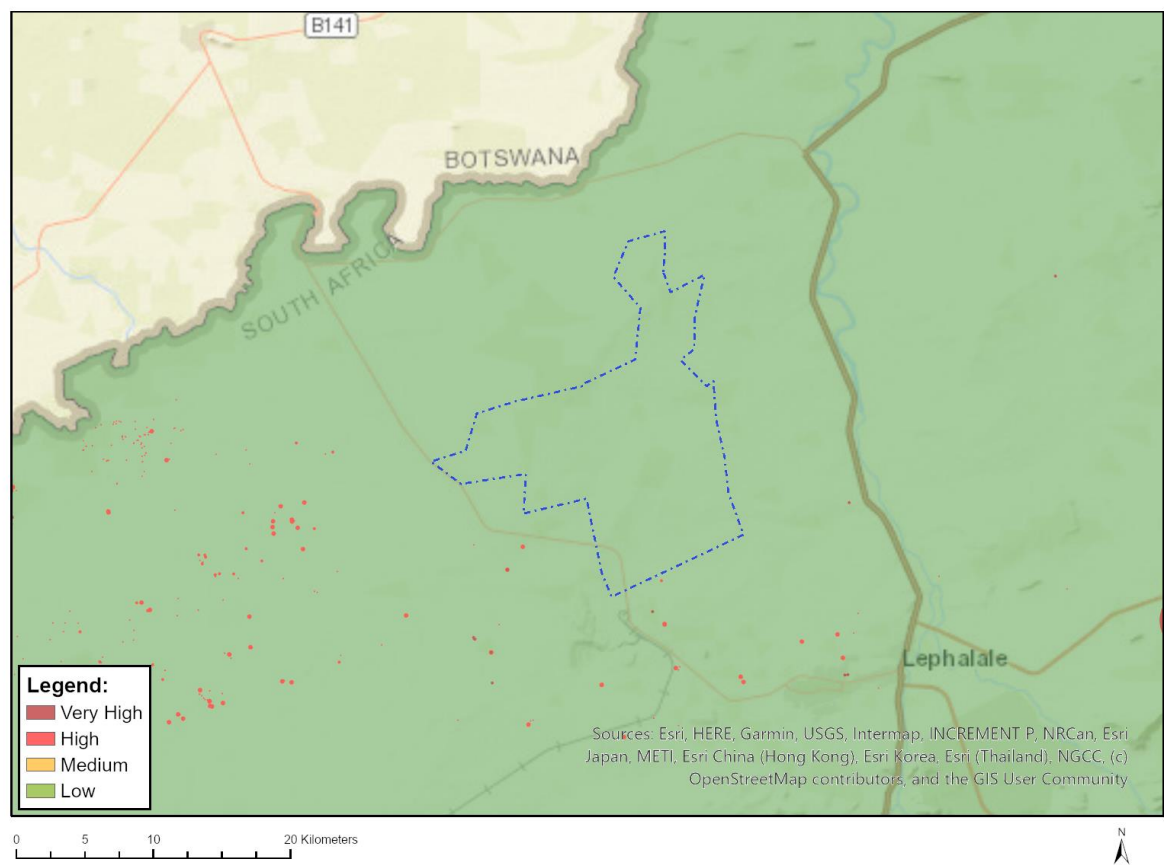


Very High sensitivity	High sensitivity	Medium sensitivity	Low sensitivity
X			

Sensitivity Features:

Sensitivity	Feature(s)
Low	Low Sensitivity
Very High	Wetlands_Depression
Very High	FEPA Subcatchment

MAP OF RELATIVE ARCHAEOLOGICAL AND CULTURAL HERITAGE THEME SENSITIVITY

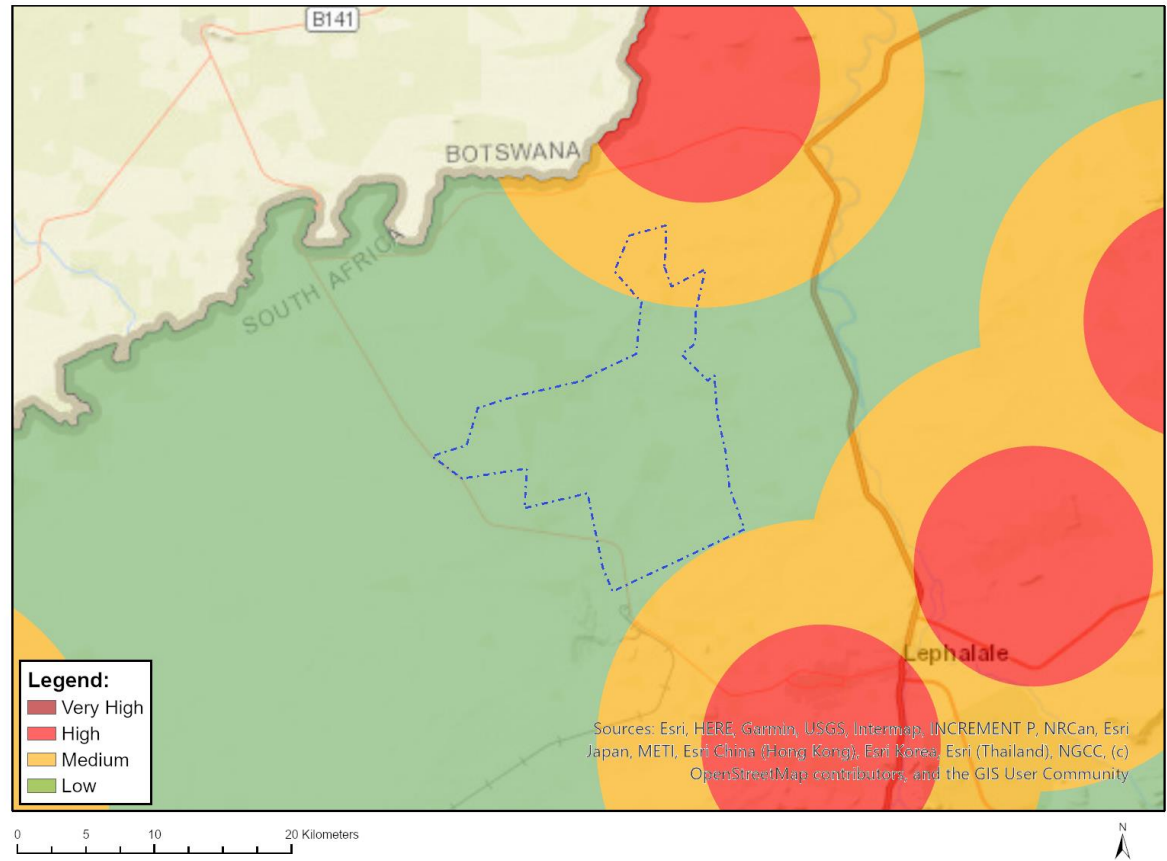


Very High sensitivity	High sensitivity	Medium sensitivity	Low sensitivity
			X

Sensitivity Features:

Sensitivity	Feature(s)
Low	Low Sensitivity

MAP OF RELATIVE CIVIL AVIATION THEME SENSITIVITY

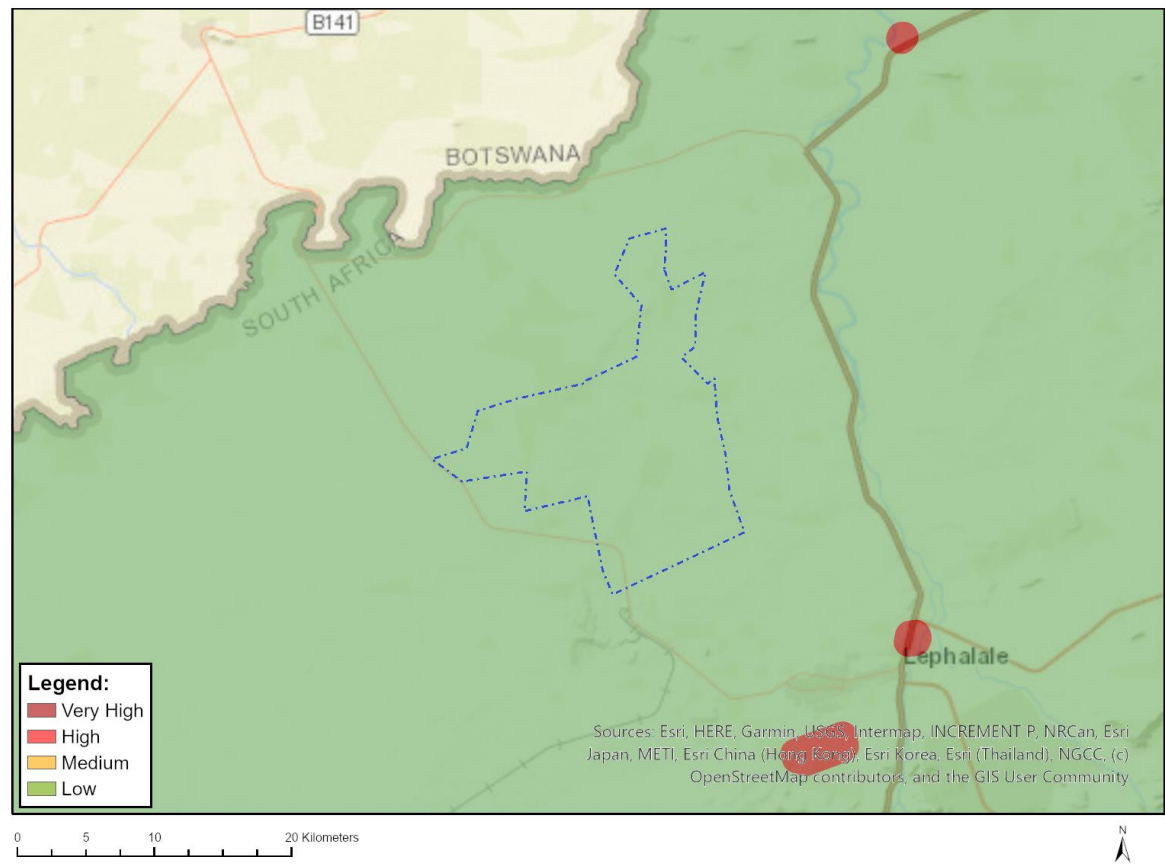


Very High sensitivity	High sensitivity	Medium sensitivity	Low sensitivity
		X	

Sensitivity Features:

Sensitivity	Feature(s)
Low	Low sensitivity
Medium	Between 8 and 15 km of other civil aviation aerodrome

MAP OF RELATIVE DEFENCE THEME SENSITIVITY

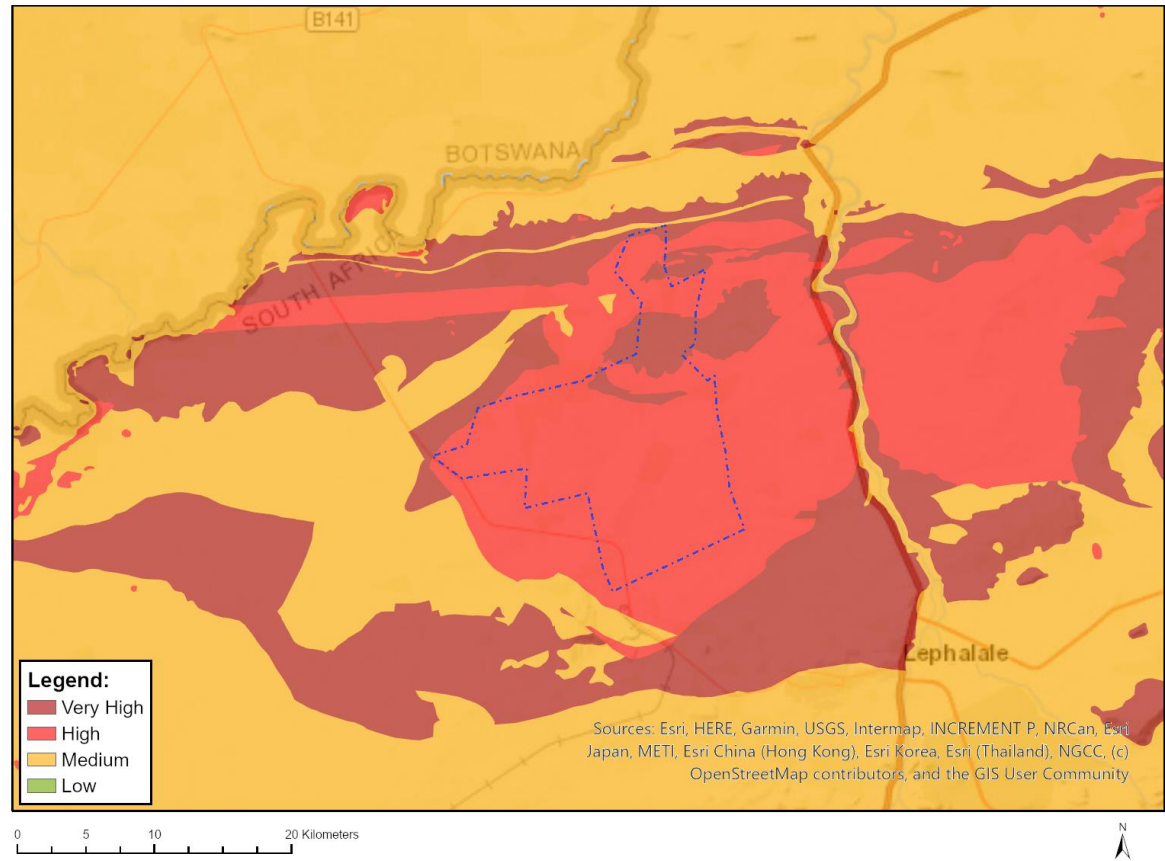


Very High sensitivity	High sensitivity	Medium sensitivity	Low sensitivity
			X

Sensitivity Features:

Sensitivity	Feature(s)
Low	Low Sensitivity

MAP OF RELATIVE PALEONTOLOGY THEME SENSITIVITY

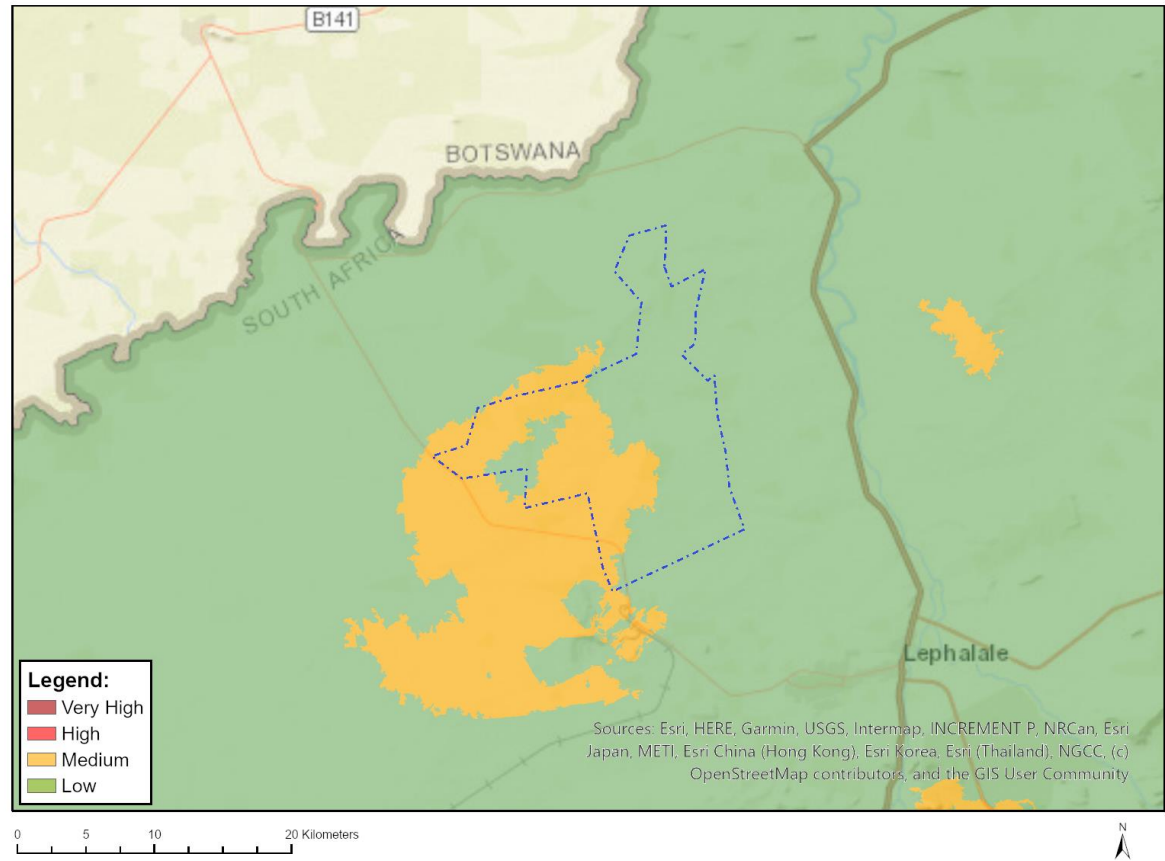


Very High sensitivity	High sensitivity	Medium sensitivity	Low sensitivity
X			

Sensitivity Features:

Sensitivity	Feature(s)
High	Features with a High paleontological sensitivity
Medium	Features with a Medium paleontological sensitivity
Very High	Features with a Very High paleontological sensitivity

MAP OF RELATIVE PLANT SPECIES THEME SENSITIVITY



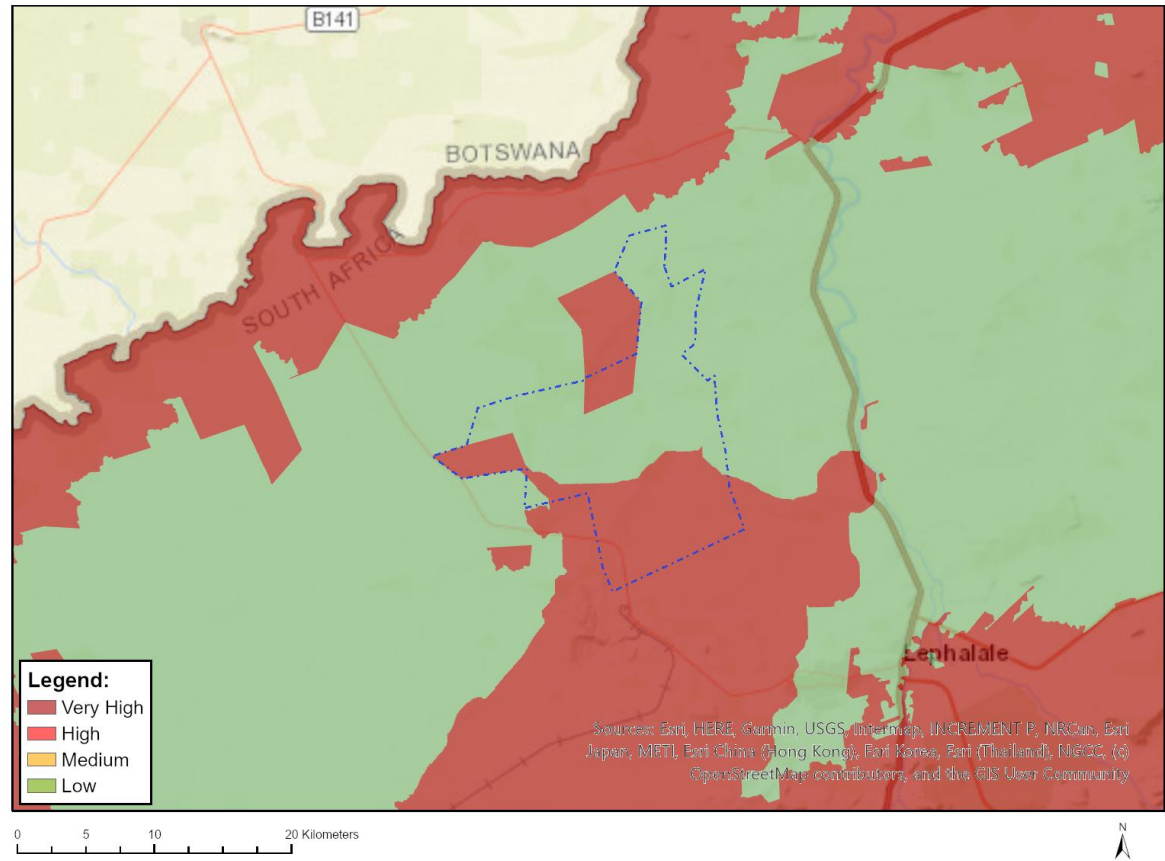
Where only a sensitive plant unique number or sensitive animal unique number is provided in the screening report and an assessment is required, the environmental assessment practitioner (EAP) or specialist is required to email SANBI at eiadatarequests@sanbi.org.za listing all sensitive species with their unique identifiers for which information is required. The name has been withheld as the species may be prone to illegal harvesting and must be protected. SANBI will release the actual species name after the details of the EAP or specialist have been documented.

Very High sensitivity	High sensitivity	Medium sensitivity	Low sensitivity
		X	

Sensitivity Features:

Sensitivity	Feature(s)
Low	Low Sensitivity
Medium	Corchorus psammophilus

MAP OF RELATIVE TERRESTRIAL BIODIVERSITY THEME SENSITIVITY



Very High sensitivity	High sensitivity	Medium sensitivity	Low sensitivity
X			

Sensitivity Features:

Sensitivity	Feature(s)
Low	Low Sensitivity
Very High	CBA 2
Very High	FEPA Subcatchment
Very High	Gideon Troskie Private Nature Reserve
Very High	Olifantspad Private Nature Reserve